

 4 bedrooms 3 bathrooms Single Garage 187.59 Sq M

## BRISA ONE SINGLE GARAGE

The property features everything you need for comfortable living. Interior spaces have been carefully planned to maximize living space, Whilst connecting seamlessly to the outdoors.



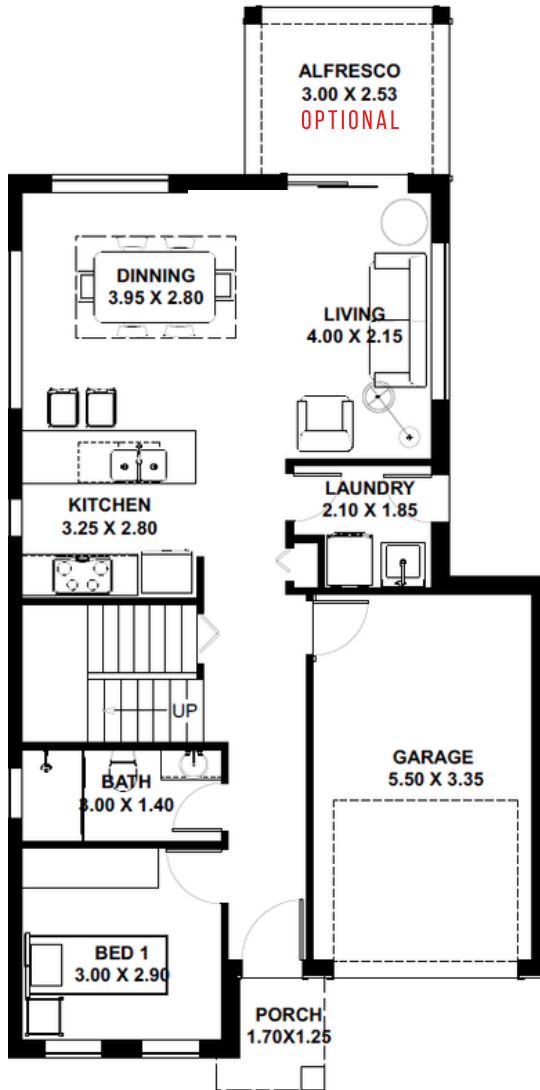
## KEY FACTS

- ✓ Double storey
- ✓ 4 bedrooms
- ✓ 3 bathrooms
- ✓ Single Garage
- ✓ 187.59 Sq M
- ✓ Exterior width 8.20m
- ✓ Exterior length 13.20m

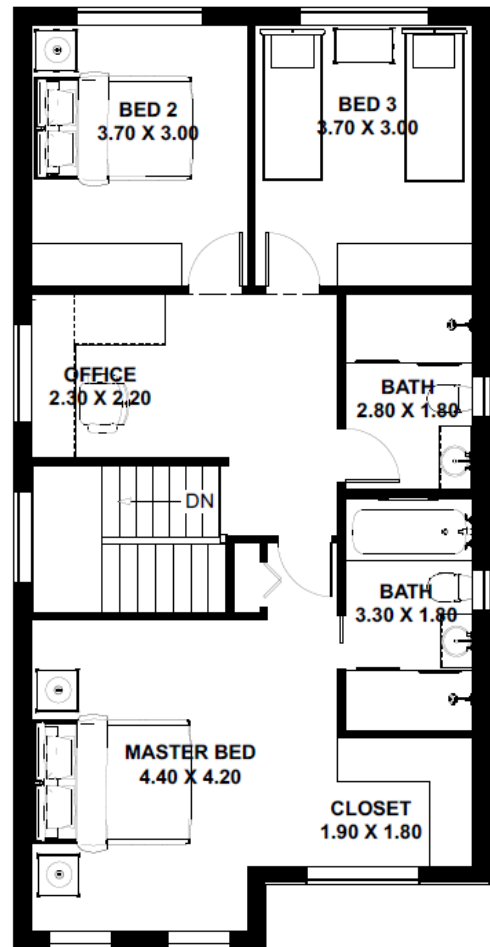
**FLOOR AREAS**

Ground Floor	95 sqm
First Floor	85 sqm
Alfresco	7.59 sqm

Total Floor Area 187.59 sqm



Ground floor



First floor

